



# MONTHLY MEMBERSHIP PROGRESS REPORT

District 4 C1

Results as of: 04/30/2018

GMT: HOWARD HUDSON

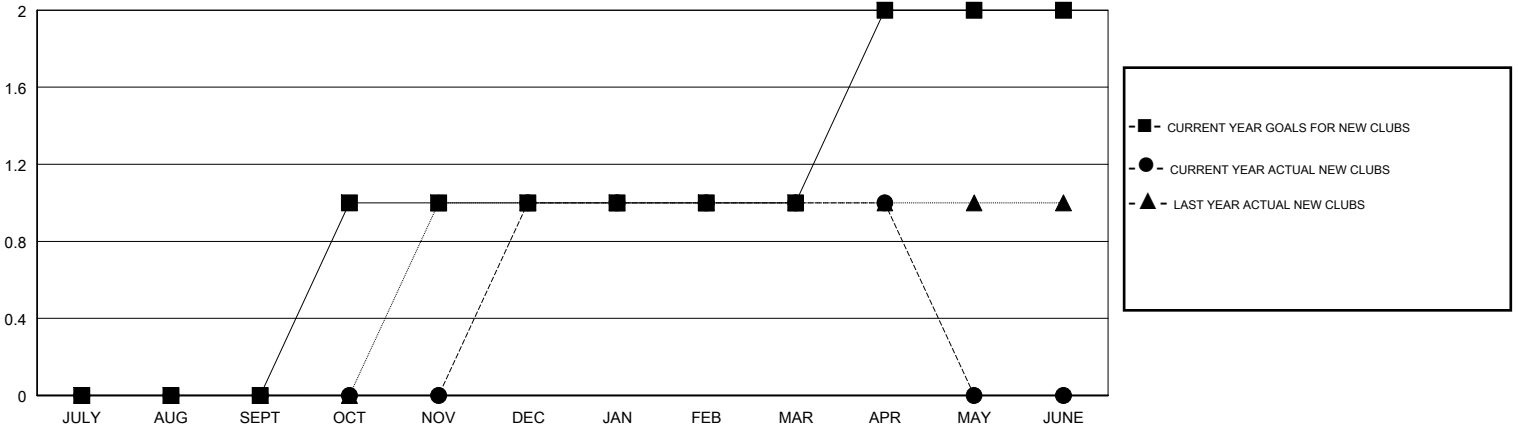
LOCATION CALIFORNIA

GMT CA

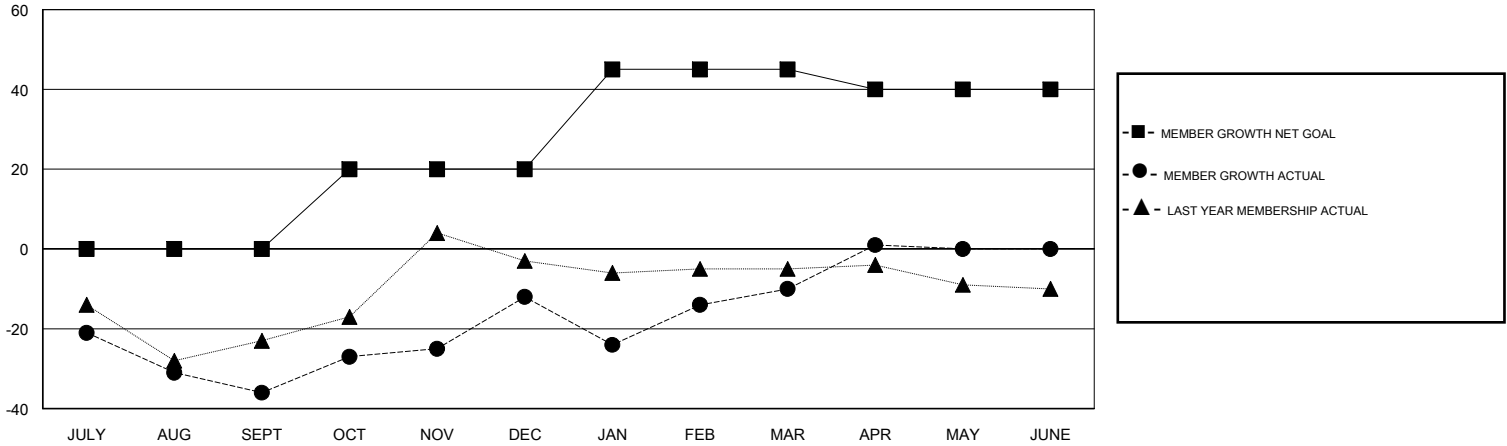
Clubs			
RESULTS FOR 2017-2018			
QUARTER	NEW CLUB GOAL	NEW CLUBS	DROPPED CLUBS
JULY/AUG/SEPT	0	0	0
OCT/NOV/DEC	1	1	0
JAN/FEB/MAR	0	0	0
APR/MAY/JUNE	1	0	0

Members			
RESULTS FOR 2017-2018			
QUARTER	MEMBER GROWTH NET GOAL	MEMBER GROWTH ACTUAL	DROPPED MEMBERS ACTUAL (including transfers)
JULY/AUG/SEPT	0	25	56
OCT/NOV/DEC	20	48	23
JAN/FEB/MAR	25	43	36
APR/MAY/JUNE	-5	16	5

GOALS AND ACTUAL NEW CLUBS CUMULATIVE



GOALS AND ACTUAL MEMBERS CUMULATIVE



DROPPED CLUBS: 0	31 CLUBS OF 47 ADDED 1 OR MORE NEW MEMBERS	<u>GENDER DISTRIBUTION</u>	
DROPPED MEMBERS		MALE	717 (66.02%)
DECEASED	22	FEMALE	369 (33.98%)
CLUB CANCELLED	0	Women Percentage Fiscal Year Goal: 35%	
OTHER	98	TOTAL FAMILY UNIT MEMBERS	227
TOTAL	120	FAMILY MEMBERS PAYING HALF DUES	115

[CLICK HERE FOR CUMULATIVE MEMBERSHIP DATA](#)